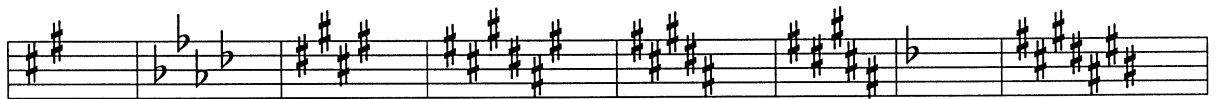
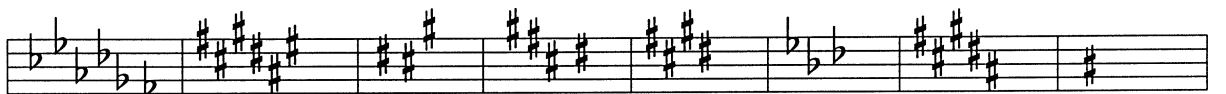
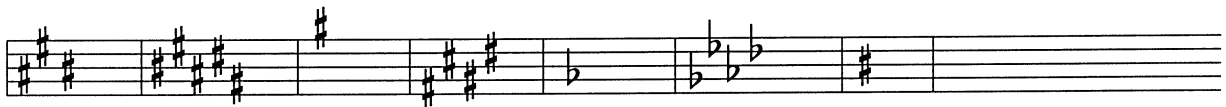


# EXERCISE #25

Some of the following key signatures are written correctly and some are written incorrectly. Place an x over the ones which are written incorrectly. The first one is done as an example.



Now that we've done all those exercises, here is a quick way to help you identify which key you are in. Let's look at the flat keys first.

When you see a key signature with flats in it, go to the next to the last flat and that will be the key which is represented.



Next to the last flat is Bb...  
so this would be the key of Bb.



Next to the last flat is Ab...  
so this would be the key of Ab.

Key signatures with sharps have a neat trick to them also. If the last sharp in the key signature is on a line, go to the immediate space higher and that will be the key represented.



Last sharp in signature.

The next immediate space higher than the last sharp in the key signature is an E...so this signature represents the key of E.

\*\*\*\*When using this short cut method for figuring key signatures, be careful to take into account sharps in the key signature which might affect the note you are looking at.



Last sharp in signature.

The next space higher is a C#, because of the sharp in the signature.

If the last sharp in the key signature is on a space, then go to the immediate line higher and that will be the key represented.

Last sharp.

The next immediate line higher than the last sharp in the key signature is a D, so this will be the key signature for the key of D.

\*\*\*\*Once again, pay attention to any sharps in the key signature which may affect the note you are looking at.

F#

Last sharp in key signature.

The next immediate line higher than the last sharp in the key signature is an F#, so this will be the key signature for F#.

## EFFECT OF KEY SIGNATURE ON SCORE OR CHART

Any sharp or flat which occurs in the key signature, will be in effect through the entire chart. The chart, or score, meaning a piece of written music.

If there is an F# in the key signature:



that sharp will affect every F in the entire chart by turning it into an F#: